

# ProFace X

## Outdoor & Vandal-resistant Facial Recognition Terminal



**ProFace X** is a fully upgraded version of the ProFace product line, which is designed to deal with all kinds of scenarios. It's powered by the latest ZKTeco-customized CPU for running the intellectualized engineering facial recognition algorithm to boost up the performance in all aspects.

With its powerful core and the latest facial recognition algorithm, the ProFace X facial recognition capability has reached a new height in the biometrics industry with a maximum of 50,000 facial templates, facial recognition speed less than 0.3 sec per face, ultimate anti-spoof ability against almost all types of fake photos and videos attack .

Other than the powerful core, ProFace X is also equipped with the latest face capture system, which enables the terminal to recognize faces under extreme strong light conditions (50,000 lux), and a microwave detector to precisely evaluate the distance between the user and the device for waking up the terminal.

ProFace X comes with a robust design that can work in extreme weather conditions from -30°C (-22°F) to 60°C (140°F); The IP68 dust and waterproof standard and IK04 protection standard also enhance its outdoor durability.

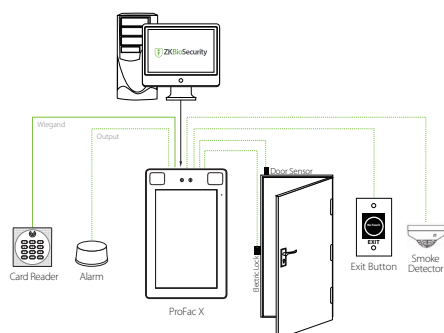
## Features

- Ultra-large capacity of facial templates; 1:N - 30,000 facial templates (standard), maximum 1:N - 50,000 facial templates (optional)
- Rapid facial recognition within 0.3s
- Anti-spoofing algorithm against print attack (laser, color and B/W photos), videos attack, and 3D mask attack
- Intelligent energy-saving design, precisely evaluates the distance up to 2.5m (8.2ft) between the user and the device by a microwave detector before waking up the recognition terminal
- Integrated 125kHz prox card reader (optional Mifare)
- 2MP starlight CMOS sensor camera with WDR function, which enables the terminal to recognize faces under extreme lighting conditions (0.5 lux – 50,000 lux)
- Supplement lighting with adjustable brightness
- 8" touch screen with 400 lux, which offers high visibility under strong and direct light
- Multiple communication methods: TCP/IP, RS485, RS232, Wi-Fi (optional)
- IP68 dust-proof and waterproof standard and IK04 protection standard
- Wide range of working temperature (-30 ~ 60°C; -22 ~ 140°F)

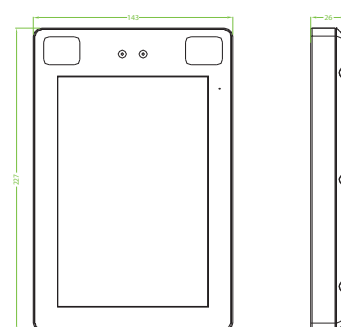
## Specifications (G: GL Exclusive Feature)

<p><b>Capacity</b></p> <p><span style="color: green;">G</span> Faces 30,000 (1:N) 50,000 (Optional)</p> <p>Users / Cards 50,000</p> <p><span style="color: green;">G</span> Transactions 1,000,000(Optional 2,000,000)</p> <p>User Photos 30,000 Event Photos 10,000</p> <p><b>Compatibility</b></p> <p>Security Relay Box Wiegand / RS485 / RS232 Slave Reader with FP / RFID / Barcode / QR-code ZKBioSecurity Software</p> <p><b>Hardware</b></p> <p><span style="color: green;">G</span> 900MHz Dual Core Customized Computer Vision CPU</p> <p><span style="color: green;">G</span> 512MB RAM / 8G Flash</p> <p><span style="color: green;">G</span> 8" Hight light (400lux) IPS Touch LCD</p> <p><span style="color: green;">G</span> 125KHz EM Reader / 13.56MHz MF(Optional)</p> <p>2MP WDR Low Light Camera Adjustable Light brightness LED Hi-Fi Voice Receiver sensitivity Microphone Distance Detection Sensor Reset Button and Tamper Switch</p>	<p><b>Access Control Interface:</b></p> <p>Lock Relay Output Alarm Output / Auxiliary Input Exit Button / Door Sensor</p> <p><b>Special Functions:</b></p> <p><span style="color: green;">G</span> IP68 &amp; IK04</p> <p><span style="color: green;">G</span> 0.3s Hight Speed Face Verification</p> <p>Live Face detection Communication Https Encrypted Optional</p> <p><span style="color: green;">G</span> Event Snapshot</p> <p><b>Standard Functions:</b></p> <p>Access Levels, Groups, Holidays, DST, , Duress Mode (Password), Anti-Passback, Record Query, Custom Wallpaper &amp; Screen Saver, Tamper Switch Alarm</p>	<p><b>Communication</b></p> <p>TCP/IP Wiegand Input / Output Wi-Fi (Optional) RS485 / RS232</p> <p><b>Additional Info</b></p> <p>Face Algorithm: ZKLiveFace5.8 Working Temperature: -30°C ~ 60°C, (-22°F~ 140°F) Working Humidity: ≤93% Storage Temperature: -40°C ~ +65°C Storage Humidity: ≤93% Net Weight: 853g Dimensions (H*L*D): 227*143*26mm</p> <p><b>Power</b></p> <p>Operating Voltage 12V DC Current Draw &lt; 2,000mA</p>
---	---	---

## Configuration



## Dimensions (mm)



ZKTECO CO.,LTD.  
www.zkteco.com  
E-mail: sales@zkteco.com

Copyright©2020 ZKTECO CO., LTD. All rights reserved.  
V2.0 2020.03.31